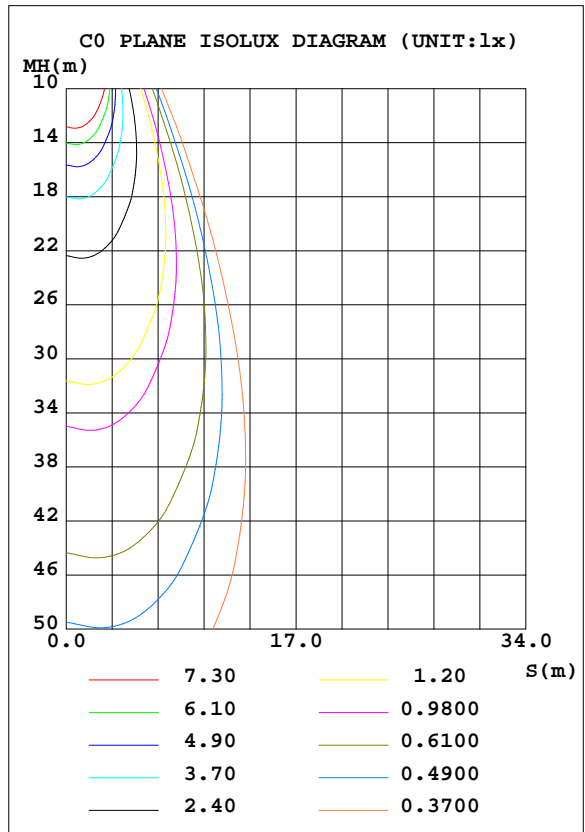
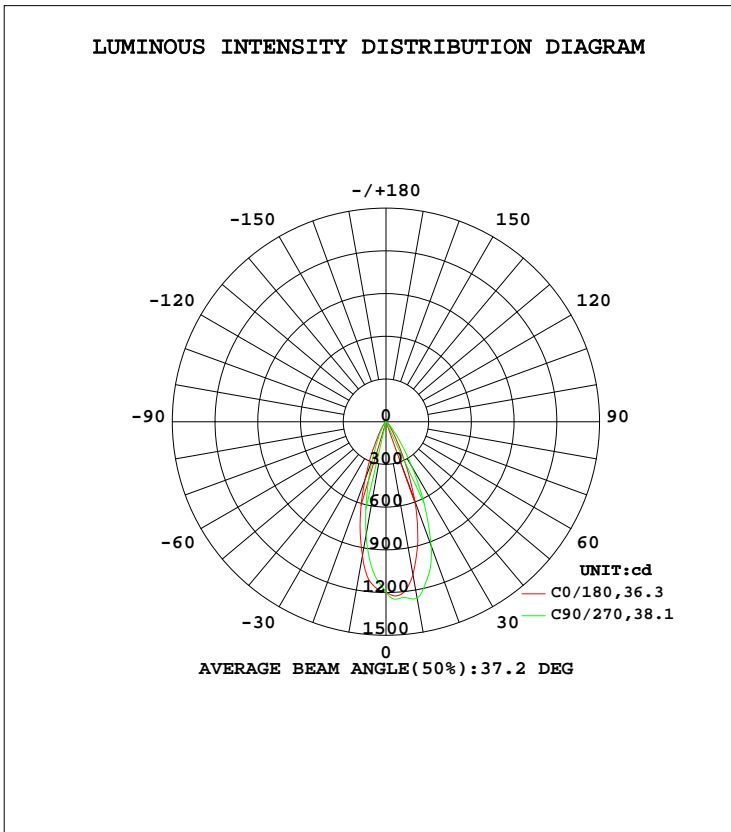


## LUMINAIRE PHOTOMETRIC TEST REPORT

Test:U:120.1V I:0.0873A P:10.30W PF:0.9818 Freq:60.01Hz Lamp Flux:562.499x1 lm		
NAME: LED 轨道灯	TYPE:	WEIGHT:N/A
SPEC.:N/A	DIM.:	SERIAL No.:N/A
MFR.: 东莞市胜智灯饰有限公司	SUR.:	Shielding Angle:N/A

DATA OF LAMP		PHOTOMETRIC DATA			
MODEL	TH417	Imax(cd)	1273	S/MH(C0/180)	0.55
NOMINAL POWER(W)	12	LOR(%)	100.0	S/MH(C90/270)	0.45
RATED VOLTAGE(V)	120	TOTAL FLUX(lm)	562.50	$\eta$ UP, DN(C0-180)	0.0,65.9
NOMINAL FLUX(lm)	562.499	CIE CLASS	DIRECT	$\eta$ UP, DN(C180-360)	0.1,34.0
LAMPS INSIDE	1	$\eta$ up(%)	0.1	CIBSE SHR NOM	0.50
TEST VOLTAGE(V)	120	$\eta$ down(%)	99.9	CIBSE SHR MAX	0.60



C Range: 0 - 360DEG  
 C Interval: 22.5DEG  
 Test Speed: HIGH  
 Temperature:24.5DEG  
 Operators:Seth  
 Test Date:2017-03-13

$\gamma$  Range: 0 - 180DEG  
 $\gamma$  Interval: 1.0DEG  
 Test System:EVERFINE GO-R5000\_V2 SYSTEM V2.0.352  
 Humidity:65.7%  
 Test Distance:26.000m [K=1.4372]  
 Remarks:

## ZONAL FLUX DIAGRAM

ZONAL FLUX DIAGRAM:

$\gamma$	C0	C45	C90	C135	C180	C225	C270	C315	$\gamma$	$\Phi$ zone	$\Phi$ total	%lum, lamp
10	1092	1236	1259	1143	956.8	825.4	807.4	889.6	0- 10	106.6	106.6	18.9,18.9
20	591.7	867.4	926.6	702.2	430.5	301.1	273.5	357.2	10- 20	220.0	326.5	58.1,58.1
30	147.3	315.9	361.3	209.5	103.8	69.51	66.45	85.34	20- 30	151.7	478.3	85,85
40	41.68	70.73	84.86	53.20	30.61	20.08	19.77	25.53	30- 40	55.94	534.2	95,95
50	11.83	21.82	26.02	16.69	9.153	5.951	5.434	7.314	40- 50	19.15	553.4	98.4,98.4
60	3.931	6.704	7.661	5.459	2.421	0.4704	0.2354	1.259	50- 60	6.378	559.8	99.5,99.5
70	0.7842	1.578	1.814	0.9497	0	0	0	0	60- 70	1.696	561.5	99.8,99.8
80	0	0.1595	0.2365	0	0	0	0	0	70- 80	0.2886	561.7	99.9,99.9
90	0	0	0	0	0	0	0	0	80- 90	0.0065	561.7	99.9,99.9
100	0	0	0	0	0	0	0	0	90-100	0	561.7	99.9,99.9
110	0	0	0	0	0	0	0	0	100-110	0	561.7	99.9,99.9
120	0	0	0	0	0	0	0	0	110-120	0	561.7	99.9,99.9
130	0	0	0	0	0	0	0	0	120-130	0	561.7	99.9,99.9
140	0	0	0	0	0.0016	0.2365	0.3958	0.0012	130-140	0.0121	561.8	99.9,99.9
150	0	0	0	0	0.8621	1.179	1.104	0.8687	140-150	0.1718	561.9	99.9,99.9
160	0	0	0	0	1.565	1.336	1.340	1.262	150-160	0.2969	562.2	100,100
170	0.2324	0	0	0	1.565	1.100	1.415	1.262	160-170	0.1969	562.4	100,100
180	0.7041	1.336	0.8665	1.025	1.408	0.4712	0.7095	1.104	170-180	0.0728	562.5	100,100
DEG	LUMINOUS INTENSITY:cd									UNIT:lm		

Conical surface Flux(90deg): 546.02 lm

%lum = 97.1%  
%lamp = 97.1%

Conical surface Flux(120deg): 559.76 lm

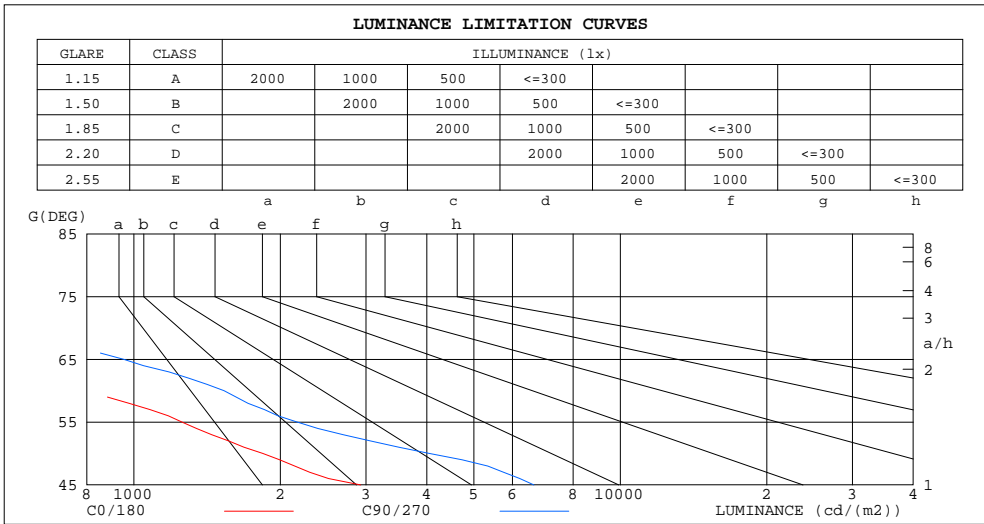
%lum = 99.5%  
%lamp = 99.5%

C Range: 0 - 360DEG  
C Interval: 22.5DEG  
Test Speed: HIGH  
Temperature:24.5DEG  
Operators:Seth  
Test Date:2017-03-13

$\gamma$  Range: 0 - 180DEG  
 $\gamma$  Interval: 1.0DEG  
Test System:EVERFINE GO-R5000\_V2 SYSTEM V2.0.352  
Humidity:65.7%  
Test Distance:26.000m [K=1.4372]  
Remarks:

## LUMINANCE LIMITATION CURVES

Test:U:120.1V I:0.0873A P:10.30W PF:0.9818 Freq:60.01Hz Lamp Flux:562.499x1 lm		
NAME: LED 轨道灯	TYPE:	WEIGHT:N/A
SPEC.:N/A	DIM.:	SERIAL No.:N/A
MFR.: 东莞市胜智灯饰有限公司	SUR.:	Shielding Angle:N/A



LUMINANCE cd/(m2)		
G(DEG)	C0/180	C90/270
85	0	0
80	0	136
75	60	275
70	229	530
65	427	953
60	786	1532
55	1255	2166
50	1840	4048
45	2927	6641

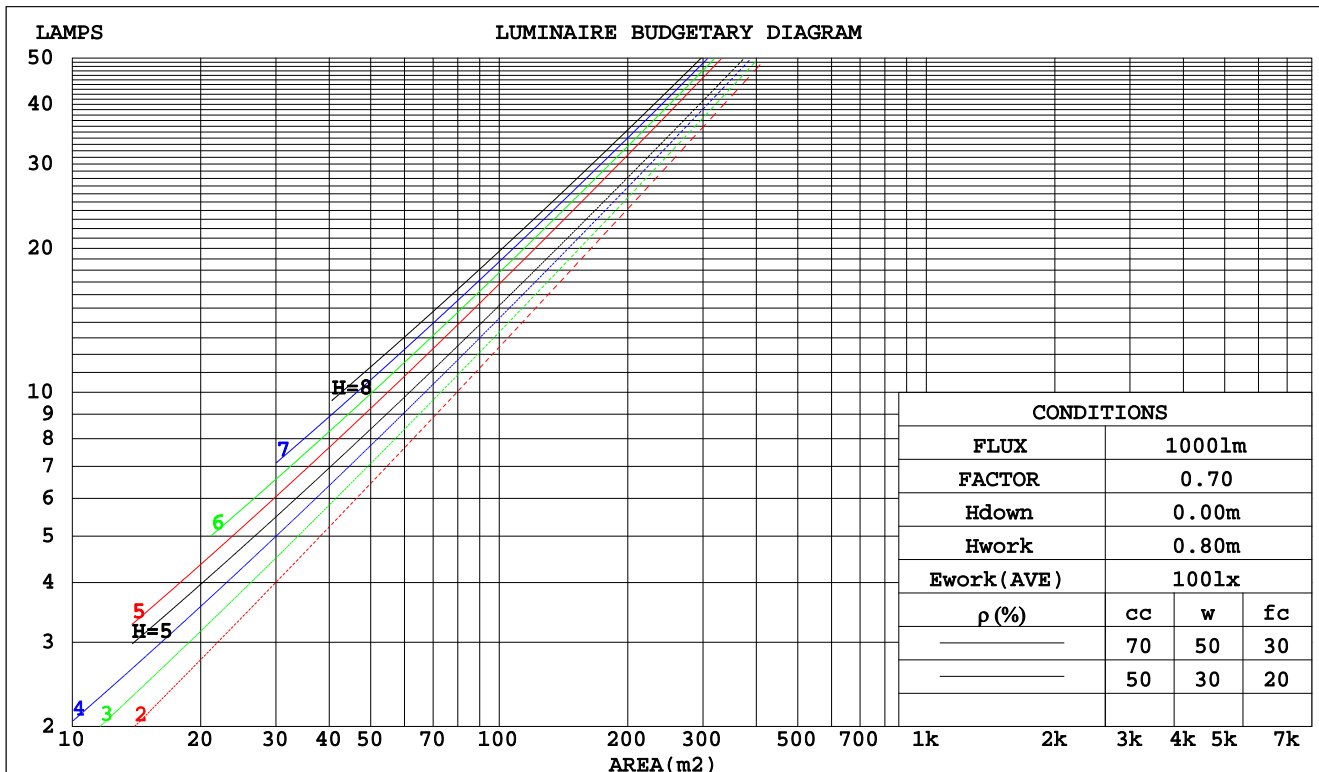
C Range: 0 - 360DEG  
 C Interval: 22.5DEG  
 Test Speed: HIGH  
 Temperature:24.5DEG  
 Operators:Seth  
 Test Date:2017-03-13

γ Range: 0 - 180DEG  
 γ Interval: 1.0DEG  
 Test System:EVERFINE GO-R5000\_V2 SYSTEM V2.0.352  
 Humidity:65.7%  
 Test Distance:26.000m [K=1.4372]  
 Remarks:

## CU AND LUMINAIRE BUDGETARY ESTIMATE DIAGRAM

Test:U:120.1V I:0.0873A P:10.30W PF:0.9818 Freq:60.01Hz Lamp Flux:562.499x1 lm		
NAME: LED 轨道灯	TYPE:	WEIGHT:N/A
SPEC.:N/A	DIM.:	SERIAL No.:N/A
MFR.: 东莞市胜智灯饰有限公司	SUR.:	Shielding Angle:N/A

pcc	80%			70%			50%			30%			10%			0
pw	50%	30%	10%	50%	30%	10%	50%	30%	10%	50%	30%	10%	50%	30%	10%	0
pfc	20%			20%			20%			20%			20%			0
RCR	RCR:Room Cavity Ratio						Coefficients of Utilization(CU)									
0.0	1.19	1.19	1.19	1.16	1.16	1.16	1.11	1.11	1.11	1.06	1.06	1.06	1.02	1.02	1.02	.00
1.0	1.12	1.09	1.07	1.10	1.08	1.06	1.05	1.04	1.02	1.02	1.01	.99	.98	.97	.97	.95
2.0	1.05	1.02	.99	1.03	1.00	.97	1.00	.98	.95	.97	.95	.93	.95	.93	.91	.90
3.0	.99	.95	.91	.98	.94	.91	.95	.92	.89	.93	.90	.88	.91	.88	.86	.85
4.0	.94	.89	.85	.93	.88	.85	.91	.87	.84	.89	.86	.83	.87	.84	.82	.81
5.0	.89	.84	.80	.88	.84	.80	.86	.82	.79	.85	.81	.79	.83	.80	.78	.77
6.0	.85	.80	.76	.84	.79	.76	.83	.78	.75	.81	.78	.75	.80	.77	.74	.73
7.0	.81	.76	.72	.80	.75	.72	.79	.75	.71	.78	.74	.71	.77	.73	.71	.70
8.0	.77	.72	.69	.77	.72	.68	.76	.71	.68	.75	.71	.68	.74	.70	.68	.66
9.0	.74	.69	.65	.73	.69	.65	.73	.68	.65	.72	.68	.65	.71	.67	.65	.64
10.0	.71	.66	.63	.70	.66	.62	.70	.65	.62	.69	.65	.62	.68	.65	.62	.61



C Range: 0 - 360DEG  
 C Interval: 22.5DEG  
 Test Speed: HIGH  
 Temperature: 24.5DEG  
 Operators: Seth  
 Test Date: 2017-03-13

γ Range: 0 - 180DEG  
 γ Interval: 1.0DEG  
 Test System: EVERFINE GO-R5000\_V2 SYSTEM V2.0.352  
 Humidity: 65.7%  
 Test Distance: 26.000m [K=1.4372]  
 Remarks:

WEC AND CCEC

Test:U:120.1V I:0.0873A P:10.30W PF:0.9818 Freq:60.01Hz Lamp Flux:562.499x1 lm									
NAME: LED 轨道灯					TYPE:			WEIGHT:N/A	
SPEC.:N/A					DIM.:			SERIAL No.:N/A	
MFR.: 东莞市胜智灯饰有限公司					SUR.:			Shielding Angle:N/A	

ρcc	80%			70%			50%			30%			10%			0
ρw	50%	30%	10%	50%	30%	10%	50%	30%	10%	50%	30%	10%	50%	30%	10%	0
ρfc	20%			20%			20%			20%			20%			0
RCR	RCR:Room Cavity Ratio						Wall Exitance Coefficients(WEC)									
0.0																
1.0	.159	.091	.029	.153	.087	.028	.140	.080	.026	.129	.074	.024	.118	.068	.022	
2.0	.151	.083	.025	.145	.080	.025	.135	.075	.023	.125	.070	.022	.116	.066	.021	
3.0	.143	.076	.023	.138	.074	.022	.129	.070	.021	.121	.066	.020	.113	.063	.019	
4.0	.135	.070	.021	.131	.069	.020	.124	.066	.020	.117	.063	.019	.110	.060	.018	
5.0	.128	.065	.019	.125	.064	.019	.118	.062	.018	.112	.059	.018	.107	.057	.017	
6.0	.122	.061	.018	.119	.060	.017	.114	.058	.017	.108	.056	.017	.103	.054	.016	
7.0	.117	.058	.016	.114	.057	.016	.109	.055	.016	.104	.053	.016	.100	.052	.015	
8.0	.112	.055	.015	.109	.054	.015	.105	.052	.015	.101	.051	.015	.097	.050	.014	
9.0	.107	.052	.014	.105	.051	.014	.101	.050	.014	.097	.049	.014	.094	.048	.014	
10.0	.103	.049	.014	.101	.049	.014	.097	.048	.013	.094	.047	.013	.091	.046	.013	

ρcc	80%			70%			50%			30%			10%			0
ρw	50%	30%	10%	50%	30%	10%	50%	30%	10%	50%	30%	10%	50%	30%	10%	0
ρfc	20%			20%			20%			20%			20%			0
RCR	RCR:Room Cavity Ratio						Ceiling Cavity Exitance Coefficients(CCEC)									
0.0	.191	.191	.191	.164	.164	.164	.112	.112	.112	.064	.064	.064	.021	.021	.021	
1.0	.171	.158	.147	.146	.136	.127	.100	.094	.088	.058	.054	.051	.018	.017	.016	
2.0	.154	.134	.116	.132	.115	.100	.091	.080	.070	.052	.046	.041	.017	.015	.013	
3.0	.141	.114	.093	.121	.099	.081	.083	.069	.057	.048	.040	.033	.015	.013	.011	
4.0	.130	.099	.076	.111	.086	.066	.077	.060	.047	.044	.035	.028	.014	.011	.009	
5.0	.120	.088	.063	.103	.076	.055	.071	.053	.039	.041	.031	.023	.013	.010	.008	
6.0	.112	.078	.053	.097	.068	.046	.067	.047	.033	.039	.028	.020	.012	.009	.006	
7.0	.105	.070	.045	.091	.061	.040	.063	.043	.028	.036	.025	.017	.012	.008	.006	
8.0	.099	.064	.039	.086	.055	.034	.059	.039	.024	.034	.023	.014	.011	.008	.005	
9.0	.094	.058	.034	.081	.051	.030	.056	.036	.021	.033	.021	.013	.011	.007	.004	
10.0	.090	.054	.030	.077	.047	.026	.054	.033	.019	.031	.019	.011	.010	.006	.004	

C Range: 0 - 360DEG  
 C Interval: 22.5DEG  
 Test Speed: HIGH  
 Temperature:24.5DEG  
 Operators:Seth  
 Test Date:2017-03-13

γ Range: 0 - 180DEG  
 γ Interval: 1.0DEG  
 Test System:EVERFINE GO-R5000\_V2 SYSTEM V2.0.352  
 Humidity:65.7%  
 Test Distance:26.000m [K=1.4372]  
 Remarks:

## UGR(Unified Glare Rating) Table

Test:U:120.1V I:0.0873A P:10.30W PF:0.9818 Freq:60.01Hz Lamp Flux:562.499x1 lm										
NAME: LED 轨道灯					TYPE:			WEIGHT:N/A		
SPEC.:N/A					DIM.:			SERIAL No.:N/A		
MFR.: 东莞市胜智灯饰有限公司					SUR.:			Shielding Angle:N/A		
ceiling/cavity	0.7	0.7	0.5	0.5	0.3	0.7	0.7	0.5	0.5	0.3
walls	0.5	0.3	0.5	0.3	0.3	0.5	0.3	0.5	0.3	0.3
working plane	0.2	0.2	0.2	0.2	0.2	0.2	0.2	0.2	0.2	0.2
Room dimensions	Viewed crosswise					Viewed endwise				
x = 2H y = 2H	11.4	12.2	11.6	12.4	12.5	14.9	15.7	15.1	15.9	16.1
3H	11.3	12.0	11.5	12.2	12.4	14.8	15.6	15.1	15.8	15.9
4H	11.2	11.9	11.5	12.1	12.3	14.7	15.4	15.0	15.7	15.9
6H	11.1	11.8	11.4	12.0	12.3	14.6	15.3	14.9	15.5	15.8
8H	11.1	11.7	11.4	11.9	12.2	14.6	15.2	14.9	15.5	15.8
12H	11.0	11.6	11.3	11.9	12.2	14.5	15.2	14.9	15.4	15.7
4H 2H	11.3	12.0	11.5	12.2	12.4	14.7	15.4	15.0	15.6	15.9
3H	11.1	11.8	11.5	12.0	12.3	14.6	15.2	14.9	15.5	15.8
4H	11.1	11.6	11.4	11.9	12.2	14.5	15.1	14.9	15.4	15.7
6H	11.0	11.5	11.3	11.8	12.1	14.4	14.9	14.8	15.2	15.6
8H	10.9	11.4	11.3	11.7	12.1	14.4	14.8	14.8	15.2	15.5
12H	10.9	11.3	11.3	11.6	12.0	14.3	14.7	14.7	15.1	15.5
8H 4H	10.9	11.4	11.3	11.7	12.1	14.4	14.8	14.8	15.2	15.5
6H	10.8	11.2	11.2	11.6	12.0	14.3	14.6	14.7	15.0	15.4
8H	10.8	11.1	11.2	11.5	12.0	14.2	14.5	14.6	15.0	15.4
12H	10.7	11.0	11.2	11.4	11.9	14.1	14.4	14.6	14.9	15.3
12H 4H	10.9	11.3	11.3	11.7	12.1	14.3	14.7	14.7	15.1	15.5
6H	10.8	11.1	11.2	11.5	12.0	14.2	14.5	14.6	15.0	15.4
8H	10.7	11.0	11.2	11.4	11.9	14.1	14.4	14.6	14.9	15.3
Variations with the observer position at spacings:										
S = 1.0H	+ 2.5 / - 6.1					+ 3.1 / - 6.7				
1.5H	+ 3.2 / - 4.5					+ 4.6 / - 5.7				
2.0H	+ 4.1 / - 5.1					+ 4.9 / - 5.1				

CIE Pub.117 Corrected 562.5 lm Total Lamp Luminous Flux. (8log(F/F0) = -2.0)

C Range: 0 - 360DEG  
 C Interval: 22.5DEG  
 Test Speed: HIGH  
 Temperature:24.5DEG  
 Operators:Seth  
 Test Date:2017-03-13

γ Range: 0 - 180DEG  
 γ Interval: 1.0DEG  
 Test System:EVERFINE GO-R5000\_V2 SYSTEM V2.0.352  
 Humidity:65.7%  
 Test Distance:26.000m [K=1.4372]  
 Remarks:

### UTILIZATION FACTORS TABLE

Test:U:120.1V I:0.0873A P:10.30W PF:0.9818 Freq:60.01Hz Lamp Flux:562.499x1 lm		
NAME: LED 轨道灯	TYPE:	WEIGHT:N/A
SPEC.:N/A	DIM.:	SERIAL No.:N/A
MFR.: 东莞市胜智灯饰有限公司	SUR.:	Shielding Angle:N/A

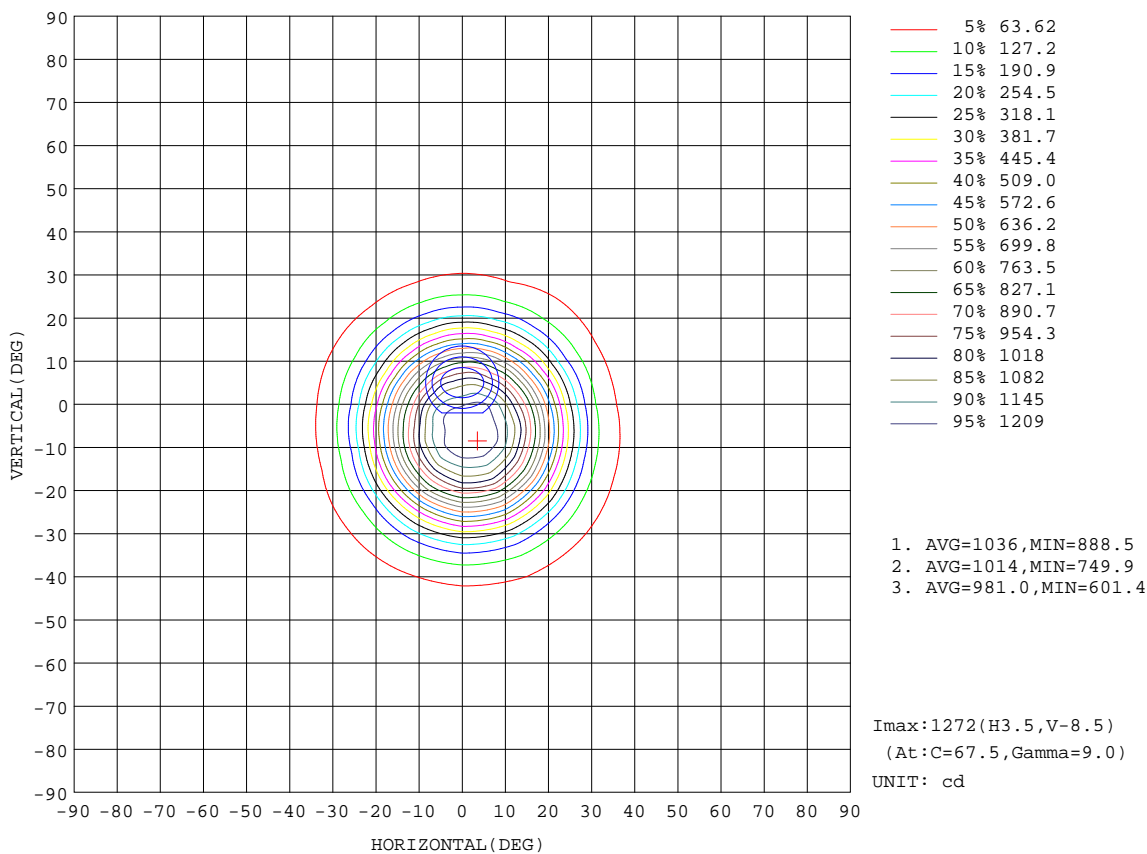
REFLECTANCE										
Ceiling	0.8	0.8	0.8	0.7	0.7	0.7	0.5	0.5	0.5	0
Walls	0.7	0.5	0.3	0.7	0.5	0.3	0.7	0.5	0.3	0
Working plane	0.2	0.2	0.2	0.2	0.2	0.2	0.2	0.2	0.2	0
ROOM INDEX	UTILIZATION FACTORS(PERCENT) $k(RI) \times RCR = 5$									
k = 0.60	88	82	79	88	82	78	87	82	78	75
0.80	96	90	86	95	90	86	94	89	86	82
1.00	100	95	91	99	94	91	98	94	90	86
1.25	104	99	96	103	98	95	101	97	94	90
1.50	106	102	99	105	101	98	103	100	97	93
2.00	109	105	102	108	104	101	105	102	100	94
2.50	111	107	104	109	106	103	106	103	101	95
3.00	112	109	106	110	107	105	107	105	103	97
4.00	114	111	109	112	110	108	108	107	105	98
5.00	115	113	111	113	111	110	109	108	107	99
ROOM INDEX	UF(total)									Direct
According to DIN EN 13032-2 2004			Suspended				SHRNOM = 1.25			

C Range: 0 - 360DEG  
 C Interval: 22.5DEG  
 Test Speed: HIGH  
 Temperature:24.5DEG  
 Operators:Seth  
 Test Date:2017-03-13

$\gamma$  Range: 0 - 180DEG  
 $\gamma$  Interval: 1.0DEG  
 Test System:EVERFINE GO-R5000\_V2 SYSTEM V2.0.352  
 Humidity:65.7%  
 Test Distance:26.000m [K=1.4372]  
 Remarks:

### ISOCANDELA DIAGRAM

Test:U:120.1V I:0.0873A P:10.30W PF:0.9818 Freq:60.01Hz Lamp Flux:562.499x1 lm		
NAME: LED 轨道灯	TYPE:	WEIGHT:N/A
SPEC.:N/A	DIM.:	SERIAL No.:N/A
MFR.: 东莞市胜智灯饰有限公司	SUR.:	Shielding Angle:N/A



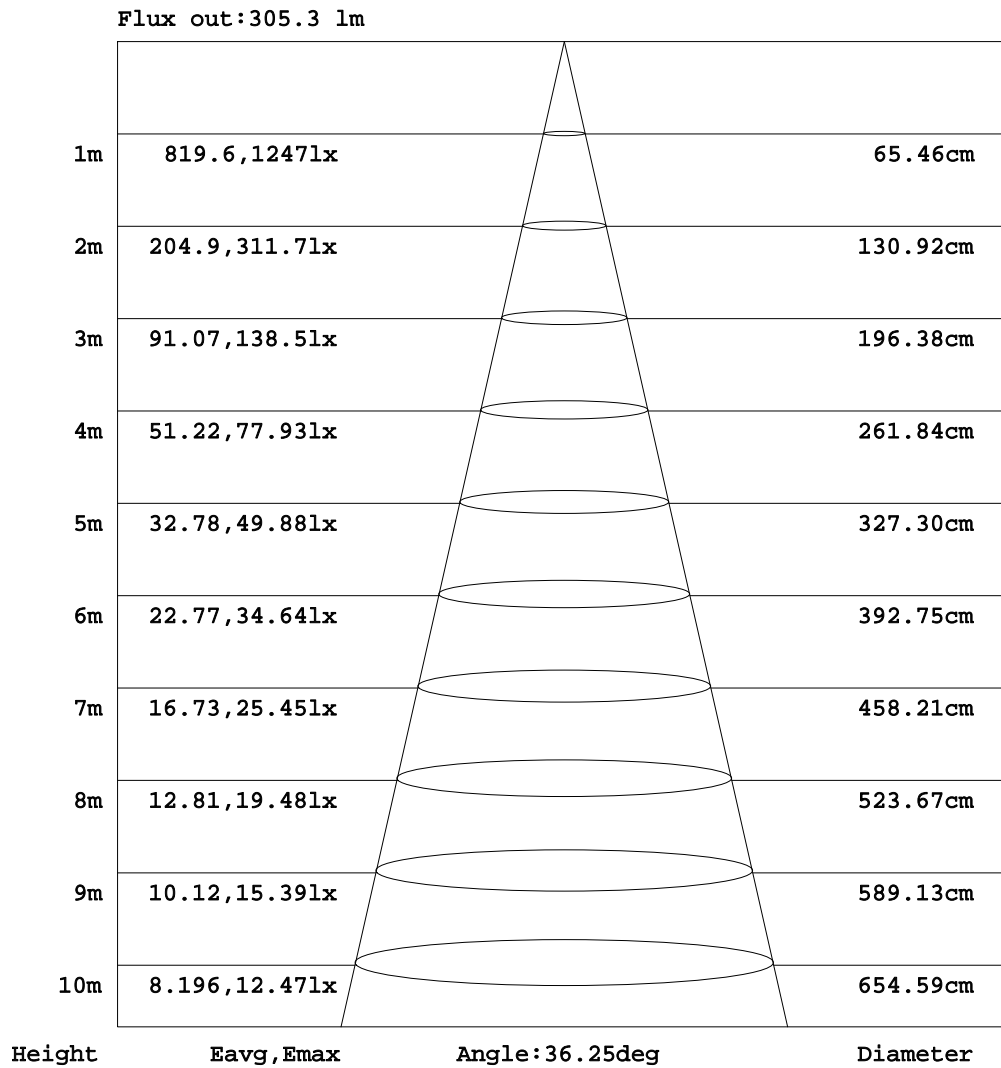
C Range: 0 - 360DEG  
 C Interval: 22.5DEG  
 Test Speed: HIGH  
 Temperature:24.5DEG  
 Operators:Seth  
 Test Date:2017-03-13

γ Range: 0 - 180DEG  
 γ Interval: 1.0DEG  
 Test System:EVERFINE GO-R5000\_V2 SYSTEM V2.0.352  
 Humidity:65.7%  
 Test Distance:26.000m [K=1.4372]  
 Remarks:



### AAI Figure

Test:U:120.1V I:0.0873A P:10.30W PF:0.9818 Freq:60.01Hz Lamp Flux:562.499x1 lm		
NAME: LED 轨道灯	TYPE:	WEIGHT:N/A
SPEC.:N/A	DIM.:	SERIAL No.:N/A
MFR.: 东莞市胜智灯饰有限公司	SUR.:	Shielding Angle:N/A



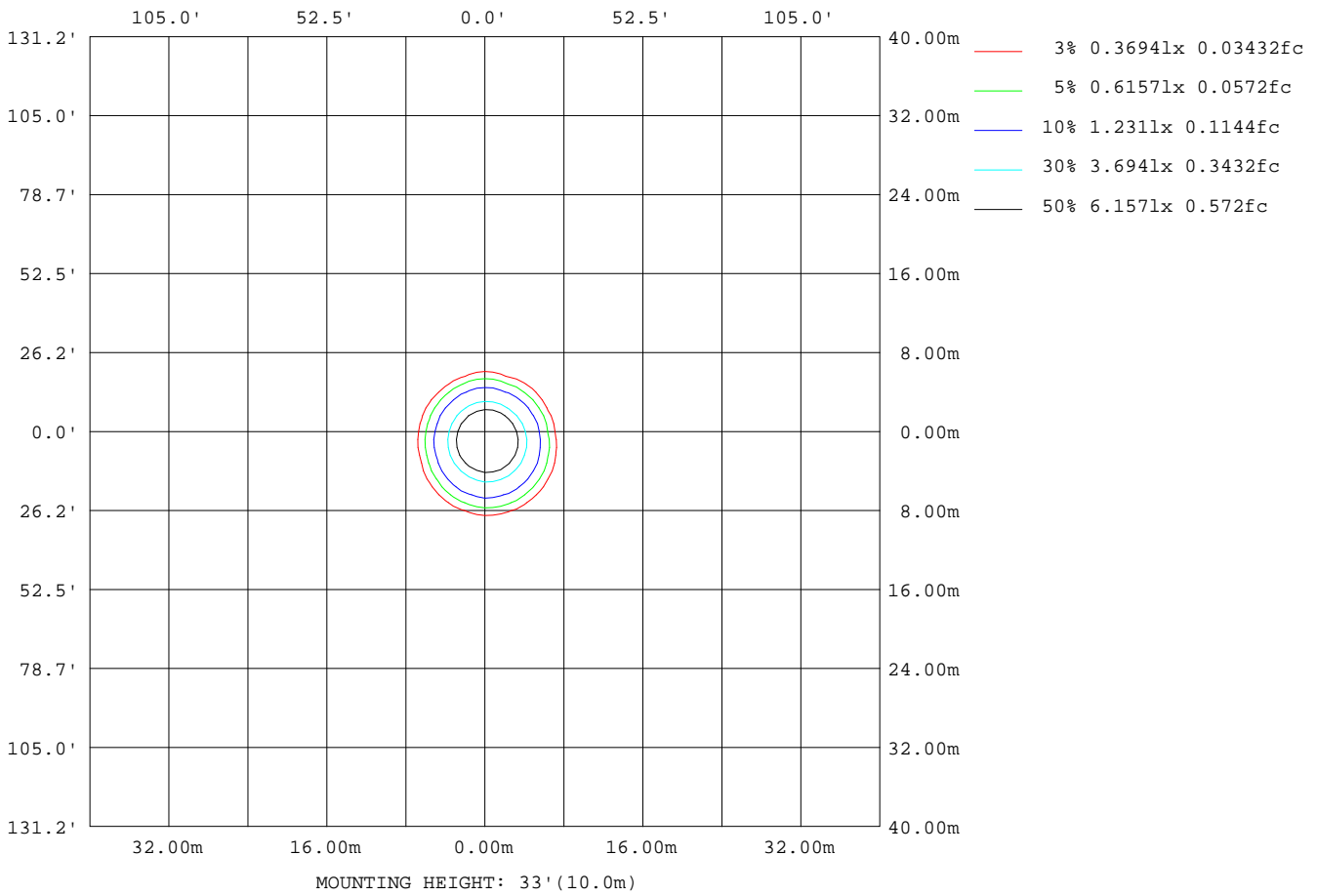
Note:The Curves indicate the illuminated area and the average illumination when the luminaire is at different distance.

C Range: 0 - 360DEG  
 C Interval: 22.5DEG  
 Test Speed: HIGH  
 Temperature:24.5DEG  
 Operators:Seth  
 Test Date:2017-03-13

γ Range: 0 - 180DEG  
 γ Interval: 1.0DEG  
 Test System:EVERFINE GO-R5000\_V2 SYSTEM V2.0.352  
 Humidity:65.7%  
 Test Distance:26.000m [K=1.4372]  
 Remarks:

## ISOLUX DIAGRAM

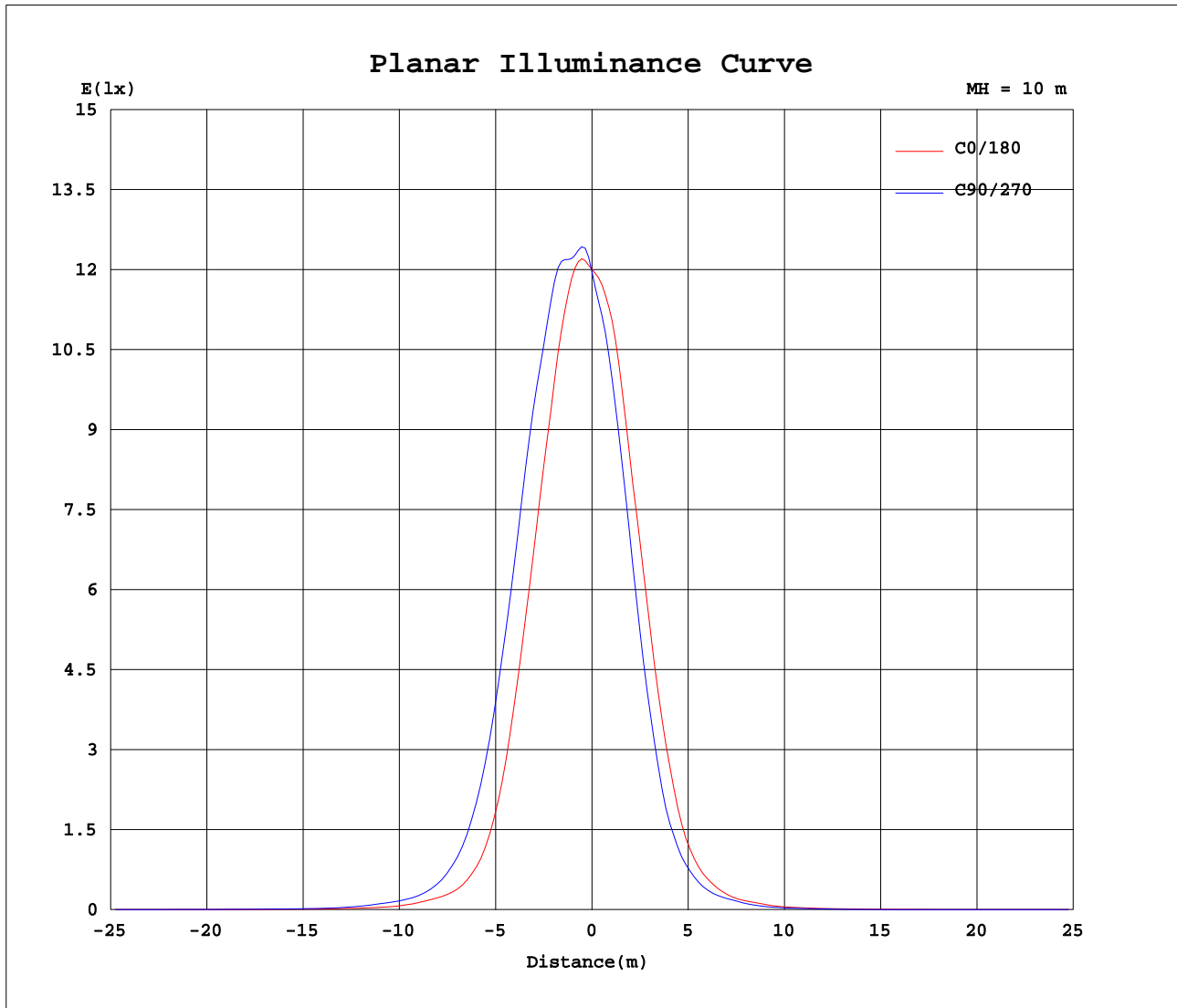
Test:U:120.1V I:0.0873A P:10.30W PF:0.9818 Freq:60.01Hz Lamp Flux:562.499x1 lm		
NAME: LED 轨道灯	TYPE:	WEIGHT:N/A
SPEC.:N/A	DIM.:	SERIAL No.:N/A
MFR.: 东莞市胜智灯饰有限公司	SUR.:	Shielding Angle:N/A



C Range: 0 - 360DEG  
 C Interval: 22.5DEG  
 Test Speed: HIGH  
 Temperature: 24.5DEG  
 Operators: Seth  
 Test Date: 2017-03-13

γ Range: 0 - 180DEG  
 γ Interval: 1.0DEG  
 Test System: EVERFINE GO-R5000\_V2 SYSTEM V2.0.352  
 Humidity: 65.7%  
 Test Distance: 26.000m [K=1.4372]  
 Remarks:

## Planar Illuminance Curve



C Range: 0 - 360DEG  
C Interval: 22.5DEG  
Test Speed: HIGH  
Temperature: 24.5DEG  
Operators: Seth  
Test Date: 2017-03-13

$\gamma$  Range: 0 - 180DEG  
 $\gamma$  Interval: 1.0DEG  
Test System: EVERFINE GO-R5000\_V2 SYSTEM V2.0.352  
Humidity: 65.7%  
Test Distance: 26.000m [K=1.4372]  
Remarks:

LUMINOUS DISTRIBUTION INTENSITY DATA

Test:U:120.1V I:0.0873A P:10.30W PF:0.9818 Freq:60.01Hz Lamp Flux:562.499x1 lm		
NAME: LED 轨道灯	TYPE:	WEIGHT:N/A
SPEC.:N/A	DIM.:	SERIAL No.:N/A
MFR.: 东莞市胜智灯饰有限公司	SUR.:	Shielding Angle:N/A

Table--1

UNIT: cd

C(DEG)\ γ (DEG)	0	22.5	45	67.5	90	112.5	135	157.5	180	202.5	225	247.5	270	292.5	315	337.5			
0	1200	1199	1198	1197	1196	1194	1191	1190	1200	1199	1198	1197	1196	1194	1191	1190			
5	1217	1248	1257	1248	1241	1241	1226	1191	1143	1100	1069	1047	1053	1079	1113	1153			
10	1092	1169	1236	1271	1259	1216	1143	1043	957	872	825	797	807	842	890	985			
15	865	1009	1111	1152	1133	1085	961	819	703	607	546	514	516	551	623	729			
20	592	740	867	945	927	836	702	555	431	346	301	273	274	295	357	451			
25	322	451	574	651	636	543	429	303	215	174	146	134	133	140	171	225			
30	147	218	316	366	361	300	210	139	104	84.1	69.5	64.1	66.5	65.5	85.3	110			
35	69.6	103	145	178	178	147	101	68.2	52.6	45.8	39.5	37.3	38.4	38.6	46.3	52.8			
40	41.7	52.7	70.7	84.9	84.9	70.8	53.2	41.3	30.6	25.5	20.1	19.0	19.8	19.6	25.5	31.0			
45	20.7	32.2	39.4	48.0	47.0	38.0	31.3	21.2	15.4	12.9	10.9	9.83	9.91	10.9	12.6	15.2			
50	11.8	16.0	21.8	26.7	26.0	21.8	16.7	11.8	9.15	7.37	5.95	5.19	5.43	5.91	7.31	9.12			
55	7.20	9.26	11.0	12.4	12.4	11.4	9.41	7.25	5.15	3.67	2.74	2.28	2.27	2.83	3.62	5.19			
60	3.93	5.43	6.70	7.57	7.66	6.73	5.46	3.87	2.42	1.17	0.47	0.31	0.24	0.55	1.26	2.20			
65	1.81	2.75	3.62	4.02	4.03	3.55	2.60	1.74	0.31	0.00	0.00	0.00	0.00	0.08	0.00	0.31			
70	0.78	1.10	1.58	1.82	1.81	1.58	0.95	0.63	0.00	0.00	0.00	0.00	0.00	0.00	0.00	0.00			
75	0.16	0.39	0.63	0.79	0.71	0.63	0.32	0.08	0.00	0.00	0.00	0.00	0.00	0.00	0.00	0.00			
80	0.00	0.08	0.16	0.16	0.24	0.16	0.00	0.00	0.00	0.00	0.00	0.00	0.00	0.00	0.00	0.00			
85	0.00	0.00	0.00	0.00	0.00	0.00	0.00	0.00	0.00	0.00	0.00	0.00	0.00	0.00	0.00	0.00			
90	0.00	0.00	0.00	0.00	0.00	0.00	0.00	0.00	0.00	0.00	0.00	0.00	0.00	0.00	0.00	0.00			
95	0.00	0.00	0.00	0.00	0.00	0.00	0.00	0.00	0.00	0.00	0.00	0.00	0.00	0.00	0.00	0.00			
100	0.00	0.00	0.00	0.00	0.00	0.00	0.00	0.00	0.00	0.00	0.00	0.00	0.00	0.00	0.00	0.00			
105	0.00	0.00	0.00	0.00	0.00	0.00	0.00	0.00	0.00	0.00	0.00	0.00	0.00	0.00	0.00	0.00			
110	0.00	0.00	0.00	0.00	0.00	0.00	0.00	0.00	0.00	0.00	0.00	0.00	0.00	0.00	0.00	0.00			
115	0.00	0.00	0.00	0.00	0.00	0.00	0.00	0.00	0.00	0.00	0.00	0.00	0.00	0.00	0.00	0.00			
120	0.00	0.00	0.00	0.00	0.00	0.00	0.00	0.00	0.00	0.00	0.00	0.00	0.00	0.00	0.00	0.00			
125	0.00	0.00	0.00	0.00	0.00	0.00	0.00	0.00	0.00	0.00	0.00	0.00	0.00	0.00	0.00	0.00			
130	0.00	0.00	0.00	0.00	0.00	0.00	0.00	0.00	0.00	0.00	0.00	0.00	0.00	0.00	0.00	0.00			
135	0.00	0.00	0.00	0.00	0.00	0.00	0.00	0.00	0.00	0.00	0.00	0.00	0.00	0.00	0.00	0.00			
140	0.00	0.00	0.00	0.00	0.00	0.00	0.00	0.00	0.00	0.16	0.24	0.32	0.40	0.24	0.00	0.00			
145	0.00	0.00	0.00	0.00	0.00	0.00	0.00	0.00	0.39	0.55	0.71	0.87	0.63	0.55	0.24	0.16			
150	0.00	0.00	0.00	0.00	0.00	0.00	0.00	0.00	0.86	1.02	1.18	1.42	1.10	1.18	0.87	0.63			
155	0.00	0.00	0.00	0.00	0.00	0.00	0.00	0.00	1.25	1.25	1.41	1.65	1.26	1.26	1.26	1.11			
160	0.00	0.00	0.00	0.00	0.00	0.00	0.00	0.00	1.56	1.25	1.34	1.65	1.34	1.26	1.26	1.42			
165	0.00	0.00	0.00	0.00	0.00	0.00	0.00	0.08	1.56	1.25	1.26	1.65	1.34	1.26	1.26	1.42			
170	0.23	0.08	0.00	0.08	0.00	0.00	0.00	0.00	1.56	1.25	1.10	1.57	1.42	1.26	1.26	1.26			
175	0.54	0.23	0.55	0.31	0.39	0.39	0.55	0.47	1.49	1.18	0.71	1.34	1.18	1.26	1.18	1.26			
180	0.70	0.47	1.34	0.70	0.87	1.18	1.03	0.71	1.41	0.78	0.47	1.26	0.71	0.86	1.10	1.10			

C Range: 0 - 360DEG  
 C Interval: 22.5DEG  
 Test Speed: HIGH  
 Temperature:24.5DEG  
 Operators:Seth  
 Test Date:2017-03-13

γ Range: 0 - 180DEG  
 γ Interval: 1.0DEG  
 Test System:EVERFINE GO-R5000\_V2 SYSTEM V2.0.352  
 Humidity:65.7%  
 Test Distance:26.000m [K=1.4372]  
 Remarks: