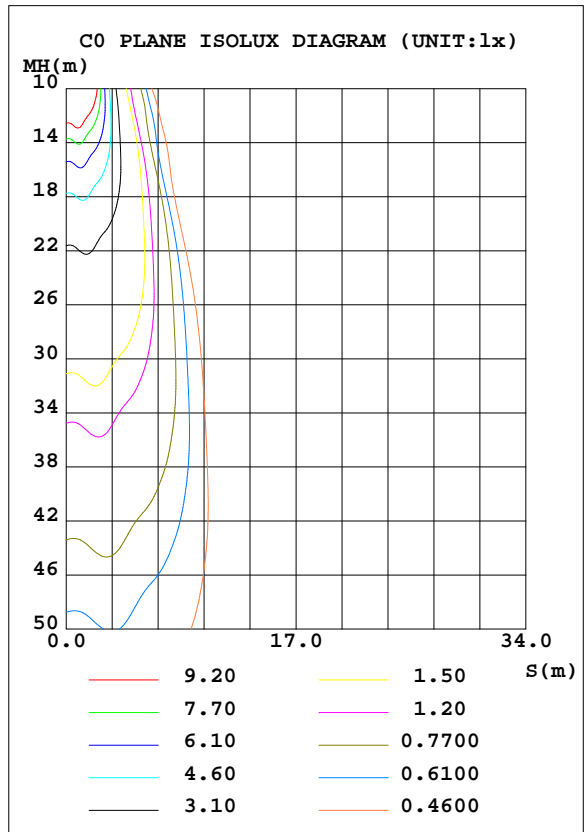
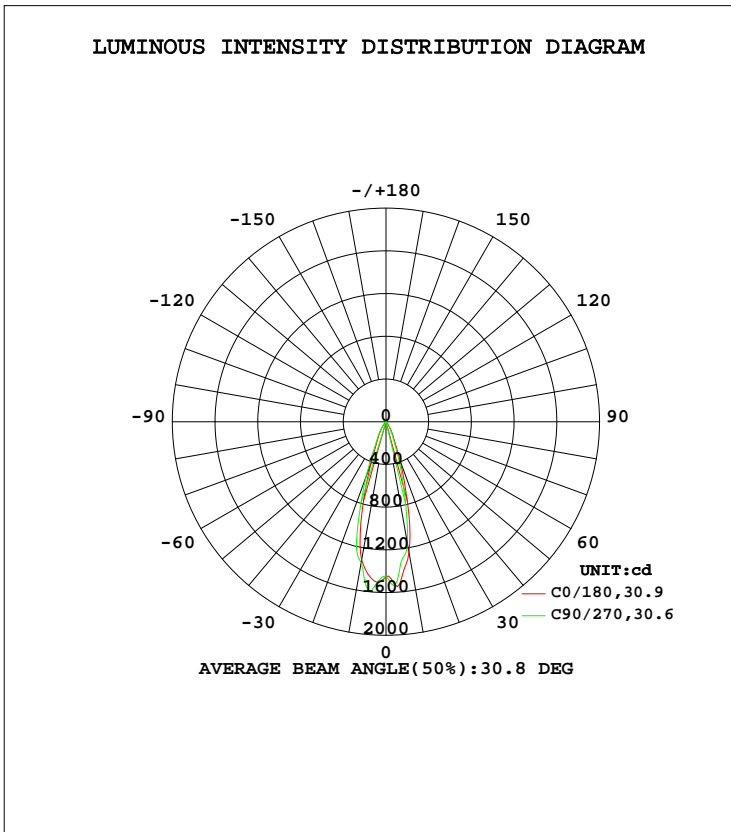


LUMINAIRE PHOTOMETRIC TEST REPORT

Test:U:120.0V I:0.0884A P:10.40W PF:0.9812 Freq:60.01Hz Lamp Flux:509.876x1 lm		
NAME: LED 轨道灯	TYPE:	WEIGHT:N/A
SPEC.:N/A	DIM.:	SERIAL No.:N/A
MFR.: 东莞市胜智灯饰有限公司	SUR.:	Shielding Angle:N/A

DATA OF LAMP		PHOTOMETRIC DATA			
MODEL	TH415	Imax(cd)	1643	S/MH(C0/180)	0.51
NOMINAL POWER(W)	12	LOR(%)	100.0	S/MH(C90/270)	0.55
RATED VOLTAGE(V)	120	TOTAL FLUX(lm)	509.88	η UP, DN(C0-180)	0.0,44.1
NOMINAL FLUX(lm)	509.876	CIE CLASS	DIRECT	η UP, DN(C180-360)	0.1,55.8
LAMPS INSIDE	1	η up(%)	0.1	CIBSE SHR NOM	0.50
TEST VOLTAGE(V)	120	η down(%)	99.9	CIBSE SHR MAX	0.50



C Range: 0 - 360DEG
 C Interval: 22.5DEG
 Test Speed: HIGH
 Temperature:24.5DEG
 Operators:Seth
 Test Date:2017-03-13

γ Range: 0 - 180DEG
 γ Interval: 1.0DEG
 Test System:EVERFINE GO-R5000_V2 SYSTEM V2.0.352
 Humidity:65.7%
 Test Distance:26.000m [K=1.4372]
 Remarks:

ZONAL FLUX DIAGRAM

ZONAL FLUX DIAGRAM:

γ	C0	C45	C90	C135	C180	C225	C270	C315	γ	Φ zone	Φ total	%lum,lamp
10	1240	1152	1160	1203	1315	1355	1343	1319	0- 10	133.7	133.7	26.2,26.2
20	386.8	358.2	301.1	290.7	413.6	536.6	545.0	419.5	10- 20	222.4	356.1	69.8,69.8
30	101.7	97.25	84.35	90.75	116.8	138.0	137.0	116.0	20- 30	93.55	449.6	88.2,88.2
40	26.13	22.58	23.08	25.49	30.10	38.72	36.15	30.83	30- 40	37.85	487.5	95.6,95.6
50	9.285	8.335	7.768	8.154	10.10	11.54	11.41	10.11	40- 50	13.36	500.8	98.2,98.2
60	3.926	3.699	3.607	3.532	3.762	3.685	3.755	3.365	50- 60	5.317	506.2	99.3,99.3
70	1.728	1.734	1.649	1.650	1.409	1.175	1.410	1.096	60- 70	2.443	508.6	99.8,99.8
80	0.3151	0.1598	0.0803	0.2364	0	0	0	0	70- 80	0.6686	509.3	99.9,99.9
90	0	0	0	0	0	0	0	0	80- 90	0.0079	509.3	99.9,99.9
100	0	0	0	0	0	0	0	0	90-100	0	509.3	99.9,99.9
110	0	0	0	0	0	0	0	0	100-110	0	509.3	99.9,99.9
120	0	0	0	0	0	0	0	0	110-120	0	509.3	99.9,99.9
130	0	0	0	0	0	0	0	0	120-130	0	509.3	99.9,99.9
140	0	0	0	0	0	0	0	0	130-140	0	509.3	99.9,99.9
150	0	0	0	0	0.5510	0.3933	0.1614	0.2391	140-150	0.0252	509.3	99.9,99.9
160	0	0	0	0	1.648	1.258	1.255	1.334	150-160	0.2197	509.5	99.9,99.9
170	0.2341	0.3929	0.4692	0.6252	1.648	1.180	1.411	1.725	160-170	0.2356	509.8	100,100
180	0.7846	1.967	1.645	1.796	1.491	0.7082	1.254	1.646	170-180	0.1109	509.9	100,100
DEG	LUMINOUS INTENSITY:cd									UNIT:lm		

Conical surface Flux(90deg): 495.72 lm

%lum = 97.2%

%lamp = 97.2%

Conical surface Flux(120deg): 506.16 lm

%lum = 99.3%

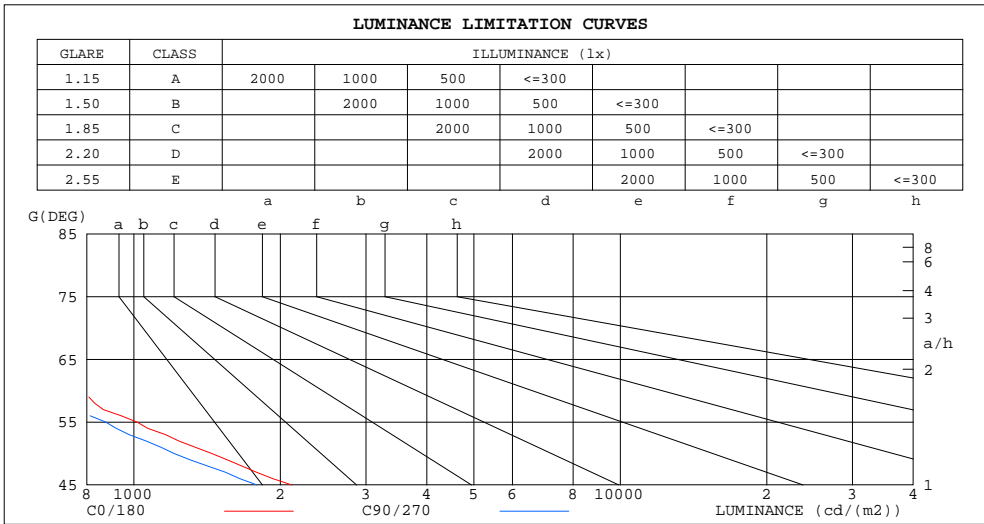
%lamp = 99.3%

C Range: 0 - 360DEG
 C Interval: 22.5DEG
 Test Speed: HIGH
 Temperature:24.5DEG
 Operators:Seth
 Test Date:2017-03-13

γ Range: 0 - 180DEG
 γ Interval: 1.0DEG
 Test System:EVERFINE GO-R5000_V2 SYSTEM V2.0.352
 Humidity:65.7%
 Test Distance:26.000m [K=1.4372]
 Remarks:

LUMINANCE LIMITATION CURVES

Test:U:120.0V I:0.0884A P:10.40W PF:0.9812 Freq:60.01Hz Lamp Flux:509.876x1 lm		
NAME: LED 轨道灯	TYPE:	WEIGHT:N/A
SPEC.:N/A	DIM.:	SERIAL No.:N/A
MFR.: 东莞市胜智灯饰有限公司	SUR.:	Shielding Angle:N/A



LUMINANCE cd/(m2)		
G(DEG)	C0/180	C90/270
85	0	0
80	181	46
75	335	333
70	505	482
65	632	577
60	785	721
55	1015	875
50	1445	1208
45	2110	1789

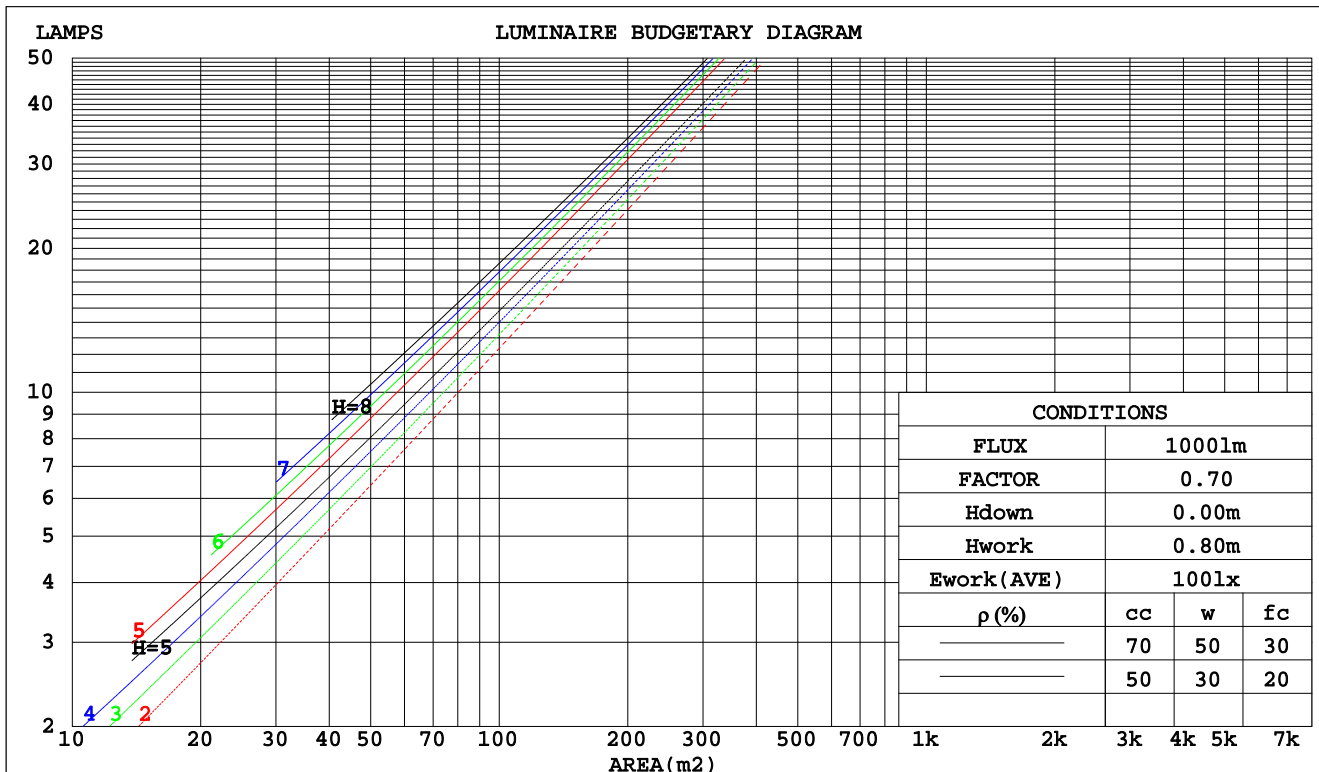
C Range: 0 - 360DEG
 C Interval: 22.5DEG
 Test Speed: HIGH
 Temperature:24.5DEG
 Operators:Seth
 Test Date:2017-03-13

γ Range: 0 - 180DEG
 γ Interval: 1.0DEG
 Test System:EVERFINE GO-R5000_V2 SYSTEM V2.0.352
 Humidity:65.7%
 Test Distance:26.000m [K=1.4372]
 Remarks:

CU AND LUMINAIRE BUDGETARY ESTIMATE DIAGRAM

Test:U:120.0V I:0.0884A P:10.40W PF:0.9812 Freq:60.01Hz Lamp Flux:509.876x1 lm		
NAME: LED 轨道灯	TYPE:	WEIGHT:N/A
SPEC.:N/A	DIM.:	SERIAL No.:N/A
MFR.: 东莞市胜智灯饰有限公司	SUR.:	Shielding Angle:N/A

pcc	80%			70%			50%			30%			10%			0
	50%	30%	10%	50%	30%	10%	50%	30%	10%	50%	30%	10%	50%	30%	10%	0
pw	50%	30%	10%	50%	30%	10%	50%	30%	10%	50%	30%	10%	50%	30%	10%	0
pfc	20%	20%	20%	20%	20%	20%	20%	20%	20%	20%	20%	20%	20%	20%	20%	0
RCR	RCR:Room Cavity Ratio															
	Coefficients of Utilization(CU)															
0.0	1.19	1.19	1.19	1.16	1.16	1.16	1.11	1.11	1.11	1.06	1.06	1.06	1.02	1.02	1.02	.00
1.0	1.12	1.10	1.08	1.10	1.08	1.06	1.06	1.05	1.03	1.02	1.01	1.00	.99	.98	.97	.95
2.0	1.06	1.03	.00	1.04	1.01	.99	1.01	.99	.97	.98	.96	.95	.96	.94	.93	.91
3.0	1.01	.97	.93	.99	.96	.93	.97	.94	.91	.95	.92	.90	.92	.90	.89	.87
4.0	.96	.92	.88	.95	.91	.88	.93	.89	.87	.91	.88	.86	.89	.87	.85	.83
5.0	.92	.87	.84	.91	.87	.83	.89	.85	.83	.88	.84	.82	.86	.83	.81	.80
6.0	.88	.83	.80	.87	.83	.80	.86	.82	.79	.85	.81	.79	.83	.80	.78	.77
7.0	.84	.80	.76	.84	.79	.76	.83	.79	.76	.82	.78	.75	.81	.77	.75	.74
8.0	.81	.77	.73	.81	.76	.73	.80	.76	.73	.79	.75	.73	.78	.75	.72	.71
9.0	.78	.74	.71	.78	.73	.70	.77	.73	.70	.76	.73	.70	.76	.72	.70	.69
10.0	.76	.71	.68	.75	.71	.68	.75	.71	.68	.74	.70	.68	.73	.70	.67	.66



C Range: 0 - 360DEG
 C Interval: 22.5DEG
 Test Speed: HIGH
 Temperature: 24.5DEG
 Operators: Seth
 Test Date: 2017-03-13

γ Range: 0 - 180DEG
 γ Interval: 1.0DEG
 Test System: EVERFINE GO-R5000_V2 SYSTEM V2.0.352
 Humidity: 65.7%
 Test Distance: 26.000m [K=1.4372]
 Remarks:

WEC AND CCEC

Test:U:120.0V I:0.0884A P:10.40W PF:0.9812 Freq:60.01Hz Lamp Flux:509.876x1 lm		
NAME: LED 轨道灯	TYPE:	WEIGHT:N/A
SPEC.:N/A	DIM.:	SERIAL No.:N/A
MFR.: 东莞市胜智灯饰有限公司	SUR.:	Shielding Angle:N/A

ρcc	80%			70%			50%			30%			10%			0
ρw	50%	30%	10%	50%	30%	10%	50%	30%	10%	50%	30%	10%	50%	30%	10%	0
ρfc	20%			20%			20%			20%			20%			0
RCR	RCR:Room Cavity Ratio						Wall Exitance Coefficients(WEC)									
0.0																
1.0	.151	.086	.027	.144	.082	.026	.131	.075	.024	.120	.069	.022	.109	.063	.020	
2.0	.141	.077	.024	.136	.075	.023	.125	.070	.022	.116	.065	.020	.107	.060	.019	
3.0	.133	.071	.021	.128	.069	.021	.119	.065	.020	.111	.061	.019	.104	.057	.018	
4.0	.125	.065	.019	.121	.063	.019	.114	.060	.018	.107	.057	.017	.100	.055	.017	
5.0	.118	.060	.017	.115	.059	.017	.109	.057	.017	.103	.054	.016	.097	.052	.016	
6.0	.112	.056	.016	.109	.055	.016	.104	.053	.015	.099	.051	.015	.094	.049	.015	
7.0	.107	.053	.015	.104	.052	.015	.099	.050	.014	.095	.049	.014	.091	.047	.014	
8.0	.102	.050	.014	.100	.049	.014	.095	.048	.014	.091	.046	.013	.088	.045	.013	
9.0	.097	.047	.013	.095	.047	.013	.092	.045	.013	.088	.044	.013	.085	.043	.012	
10.0	.093	.045	.012	.092	.044	.012	.088	.043	.012	.085	.042	.012	.082	.041	.012	

ρcc	80%			70%			50%			30%			10%			0
ρw	50%	30%	10%	50%	30%	10%	50%	30%	10%	50%	30%	10%	50%	30%	10%	0
ρfc	20%			20%			20%			20%			20%			0
RCR	RCR:Room Cavity Ratio						Ceiling Cavity Exitance Coefficients(CCEC)									
0.0																
1.0	.191	.191	.191	.164	.164	.164	.112	.112	.112	.064	.064	.064	.021	.021	.021	
2.0	.170	.158	.148	.146	.136	.127	.100	.094	.088	.057	.054	.051	.018	.017	.017	
3.0	.153	.134	.117	.131	.115	.101	.090	.080	.071	.052	.046	.041	.017	.015	.013	
4.0	.139	.114	.095	.119	.099	.082	.082	.068	.058	.047	.040	.034	.015	.013	.011	
5.0	.127	.099	.078	.109	.086	.068	.075	.060	.048	.043	.035	.028	.014	.011	.009	
6.0	.117	.087	.065	.101	.075	.056	.069	.053	.040	.040	.031	.024	.013	.010	.008	
7.0	.109	.077	.055	.094	.067	.048	.065	.047	.034	.037	.028	.020	.012	.009	.007	
8.0	.102	.069	.047	.087	.060	.041	.060	.042	.029	.035	.025	.017	.011	.008	.006	
9.0	.095	.063	.040	.082	.054	.035	.057	.038	.025	.033	.023	.015	.011	.007	.005	
10.0	.090	.057	.035	.077	.050	.031	.054	.035	.022	.031	.021	.013	.010	.007	.004	
10.0	.085	.053	.031	.073	.046	.027	.051	.032	.019	.030	.019	.011	.010	.006	.004	

C Range: 0 - 360DEG
 C Interval: 22.5DEG
 Test Speed: HIGH
 Temperature:24.5DEG
 Operators:Seth
 Test Date:2017-03-13

γ Range: 0 - 180DEG
 γ Interval: 1.0DEG
 Test System:EVERFINE GO-R5000_V2 SYSTEM V2.0.352
 Humidity:65.7%
 Test Distance:26.000m [K=1.4372]
 Remarks:

UGR(Unified Glare Rating) Table

Test:U:120.0V I:0.0884A P:10.40W PF:0.9812 Freq:60.01Hz Lamp Flux:509.876x1 lm		
NAME: LED 轨道灯	TYPE:	WEIGHT:N/A
SPEC.:N/A	DIM.:	SERIAL No.:N/A
MFR.: 东莞市胜智灯饰有限公司	SUR.:	Shielding Angle:N/A

ceiling/cavity	0.7	0.7	0.5	0.5	0.3	0.7	0.7	0.5	0.5	0.3
walls	0.5	0.3	0.5	0.3	0.3	0.5	0.3	0.5	0.3	0.3
working plane	0.2	0.2	0.2	0.2	0.2	0.2	0.2	0.2	0.2	0.2
Room dimensions	Viewed crosswise					Viewed endwise				
x = 2H y = 2H	7.0	7.7	7.2	7.9	8.0	6.3	7.1	6.5	7.2	7.4
3H	7.1	7.8	7.3	8.0	8.2	6.5	7.2	6.7	7.4	7.6
4H	7.1	7.8	7.4	8.0	8.2	6.5	7.1	6.8	7.4	7.6
6H	7.1	7.7	7.4	7.9	8.2	6.4	7.1	6.7	7.3	7.5
8H	7.0	7.6	7.3	7.9	8.1	6.4	7.0	6.7	7.2	7.5
12H	7.0	7.6	7.3	7.8	8.1	6.3	6.9	6.7	7.2	7.5
4H 2H	6.9	7.6	7.2	7.8	8.0	6.3	7.0	6.6	7.2	7.4
3H	7.1	7.7	7.4	7.9	8.2	6.5	7.1	6.8	7.4	7.6
4H	7.1	7.7	7.5	8.0	8.3	6.6	7.1	6.9	7.4	7.7
6H	7.1	7.6	7.5	7.9	8.3	6.5	7.0	6.9	7.3	7.6
8H	7.1	7.5	7.5	7.9	8.2	6.5	6.9	6.8	7.2	7.6
12H	7.0	7.4	7.4	7.8	8.2	6.4	6.8	6.8	7.2	7.6
8H 4H	7.1	7.5	7.4	7.8	8.2	6.5	6.9	6.9	7.3	7.6
6H	7.0	7.4	7.5	7.8	8.2	6.4	6.8	6.9	7.2	7.6
8H	7.0	7.3	7.4	7.7	8.2	6.4	6.7	6.8	7.1	7.5
12H	6.9	7.2	7.4	7.6	8.1	6.3	6.6	6.8	7.0	7.5
12H 4H	7.0	7.4	7.4	7.8	8.2	6.4	6.8	6.8	7.2	7.6
6H	7.0	7.3	7.4	7.7	8.2	6.4	6.7	6.8	7.1	7.5
8H	6.9	7.2	7.4	7.6	8.1	6.3	6.6	6.8	7.0	7.5
Variations with the observer position at spacings:										
S = 1.0H	+ 2.2 / - 3.0					+ 1.9 / - 2.8				
1.5H	+ 3.5 / - 2.5					+ 3.2 / - 2.3				
2.0H	+ 3.3 / - 1.7					+ 2.8 / - 1.5				

CIE Pub.117 Corrected 509.9 lm Total Lamp Luminous Flux. (8log(F/F0) = -2.3)

C Range: 0 - 360DEG
 C Interval: 22.5DEG
 Test Speed: HIGH
 Temperature:24.5DEG
 Operators:Seth
 Test Date:2017-03-13

γ Range: 0 - 180DEG
 γ Interval: 1.0DEG
 Test System:EVERFINE GO-R5000_V2 SYSTEM V2.0.352
 Humidity:65.7%
 Test Distance:26.000m [K=1.4372]
 Remarks:

UTILIZATION FACTORS TABLE

Test:U:120.0V I:0.0884A P:10.40W PF:0.9812 Freq:60.01Hz Lamp Flux:509.876x1 lm		
NAME: LED 轨道灯	TYPE:	WEIGHT:N/A
SPEC.:N/A	DIM.:	SERIAL No.:N/A
MFR.: 东莞市胜智灯饰有限公司	SUR.:	Shielding Angle:N/A

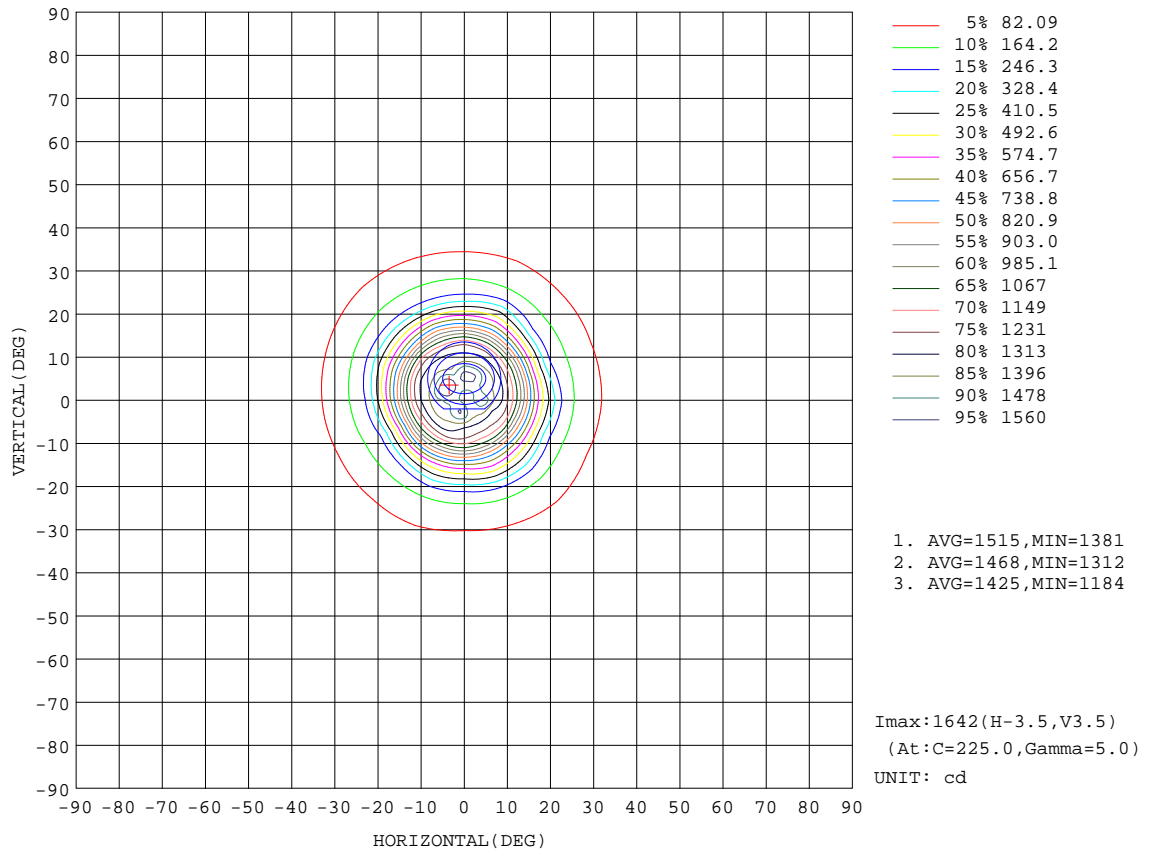
REFLECTANCE										
Ceiling	0.8	0.8	0.8	0.7	0.7	0.7	0.5	0.5	0.5	0
Walls	0.7	0.5	0.3	0.7	0.5	0.3	0.7	0.5	0.3	0
Working plane	0.2	0.2	0.2	0.2	0.2	0.2	0.2	0.2	0.2	0
ROOM INDEX	UTILIZATION FACTORS(PERCENT) k(RI) x RCR = 5									
k = 0.60	89	83	79	88	83	79	88	82	79	75
0.80	96	90	87	95	90	87	94	90	86	83
1.00	100	95	91	99	94	91	98	94	91	87
1.25	104	99	96	103	98	95	101	97	95	91
1.50	107	102	99	105	101	98	103	100	97	93
2.00	109	105	102	108	104	101	105	102	100	95
2.50	111	107	104	109	106	103	106	103	101	96
3.00	112	109	106	110	107	105	107	105	103	97
4.00	114	111	109	112	110	108	108	107	105	98
5.00	115	113	111	113	111	110	109	108	107	99
ROOM INDEX	UF(total)									Direct
According to DIN EN 13032-2 2004			Suspended				SHRNOM = 1.25			

C Range: 0 - 360DEG
 C Interval: 22.5DEG
 Test Speed: HIGH
 Temperature:24.5DEG
 Operators:Seth
 Test Date:2017-03-13

γ Range: 0 - 180DEG
 γ Interval: 1.0DEG
 Test System:EVERFINE GO-R5000_V2 SYSTEM V2.0.352
 Humidity:65.7%
 Test Distance:26.000m [K=1.4372]
 Remarks:

ISOCANDELA DIAGRAM

Test:U:120.0V I:0.0884A P:10.40W PF:0.9812 Freq:60.01Hz Lamp Flux:509.876x1 lm		
NAME: LED 轨道灯	TYPE:	WEIGHT:N/A
SPEC.:N/A	DIM.:	SERIAL No.:N/A
MFR.: 东莞市胜智灯饰有限公司	SUR.:	Shielding Angle:N/A

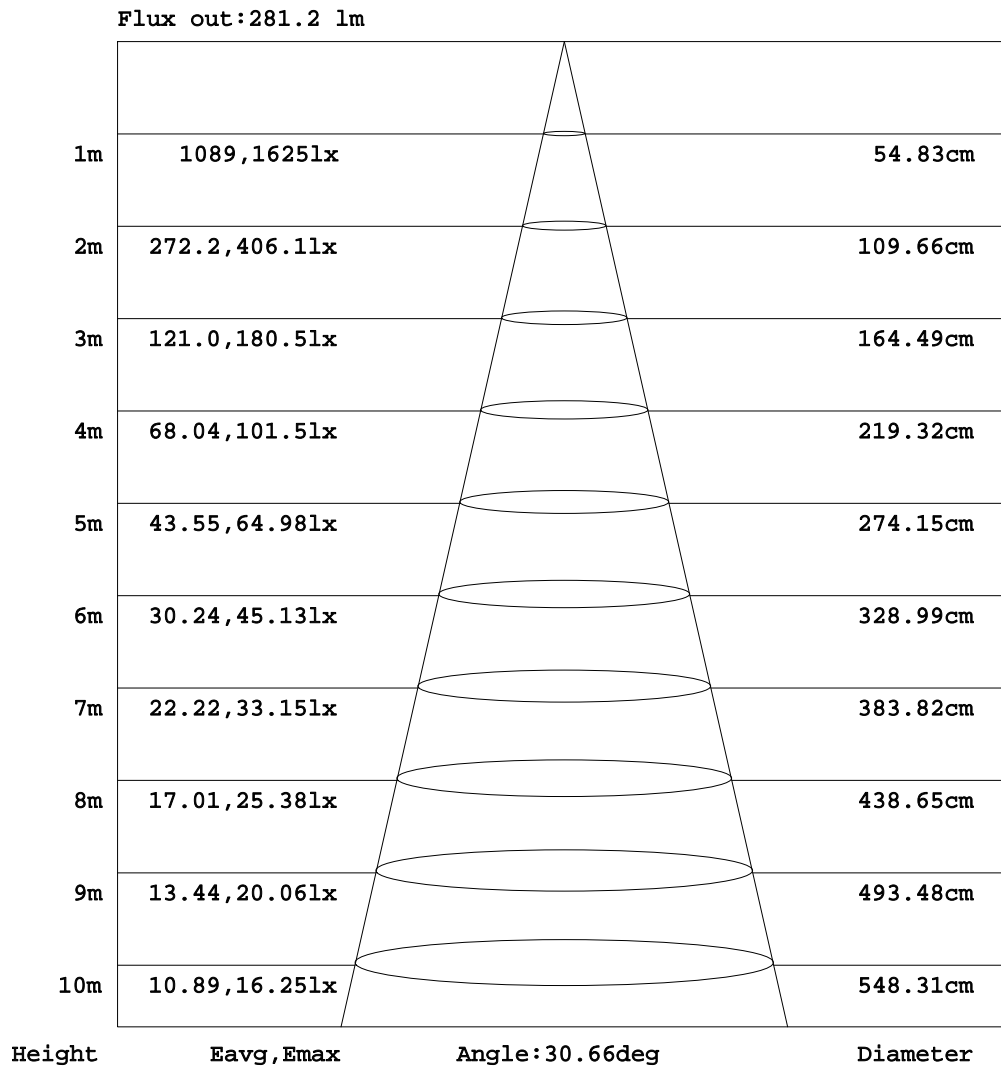


C Range: 0 - 360DEG
 C Interval: 22.5DEG
 Test Speed: HIGH
 Temperature:24.5DEG
 Operators:Seth
 Test Date:2017-03-13

γ Range: 0 - 180DEG
 γ Interval: 1.0DEG
 Test System:EVERFINE GO-R5000_V2 SYSTEM V2.0.352
 Humidity:65.7%
 Test Distance:26.000m [K=1.4372]
 Remarks:

AAI Figure

Test:U:120.0V I:0.0884A P:10.40W PF:0.9812 Freq:60.01Hz Lamp Flux:509.876x1 lm		
NAME: LED 轨道灯	TYPE:	WEIGHT:N/A
SPEC.:N/A	DIM.:	SERIAL No.:N/A
MFR.: 东莞市胜智灯饰有限公司	SUR.:	Shielding Angle:N/A



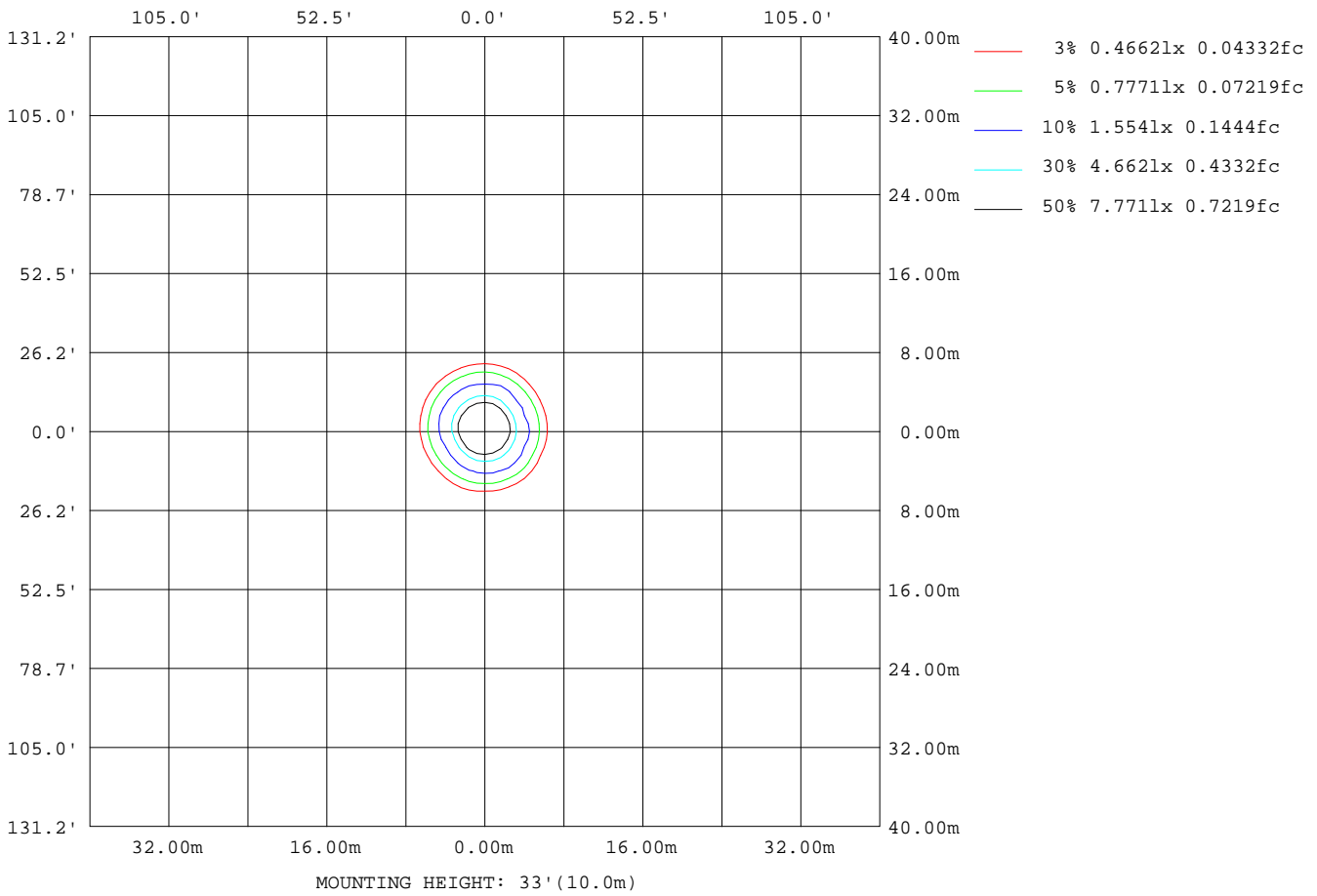
Note:The Curves indicate the illuminated area and the average illumination when the luminaire is at different distance.

C Range: 0 - 360DEG
 C Interval: 22.5DEG
 Test Speed: HIGH
 Temperature:24.5DEG
 Operators:Seth
 Test Date:2017-03-13

γ Range: 0 - 180DEG
 γ Interval: 1.0DEG
 Test System:EVERFINE GO-R5000_V2 SYSTEM V2.0.352
 Humidity:65.7%
 Test Distance:26.000m [K=1.4372]
 Remarks:

ISOLUX DIAGRAM

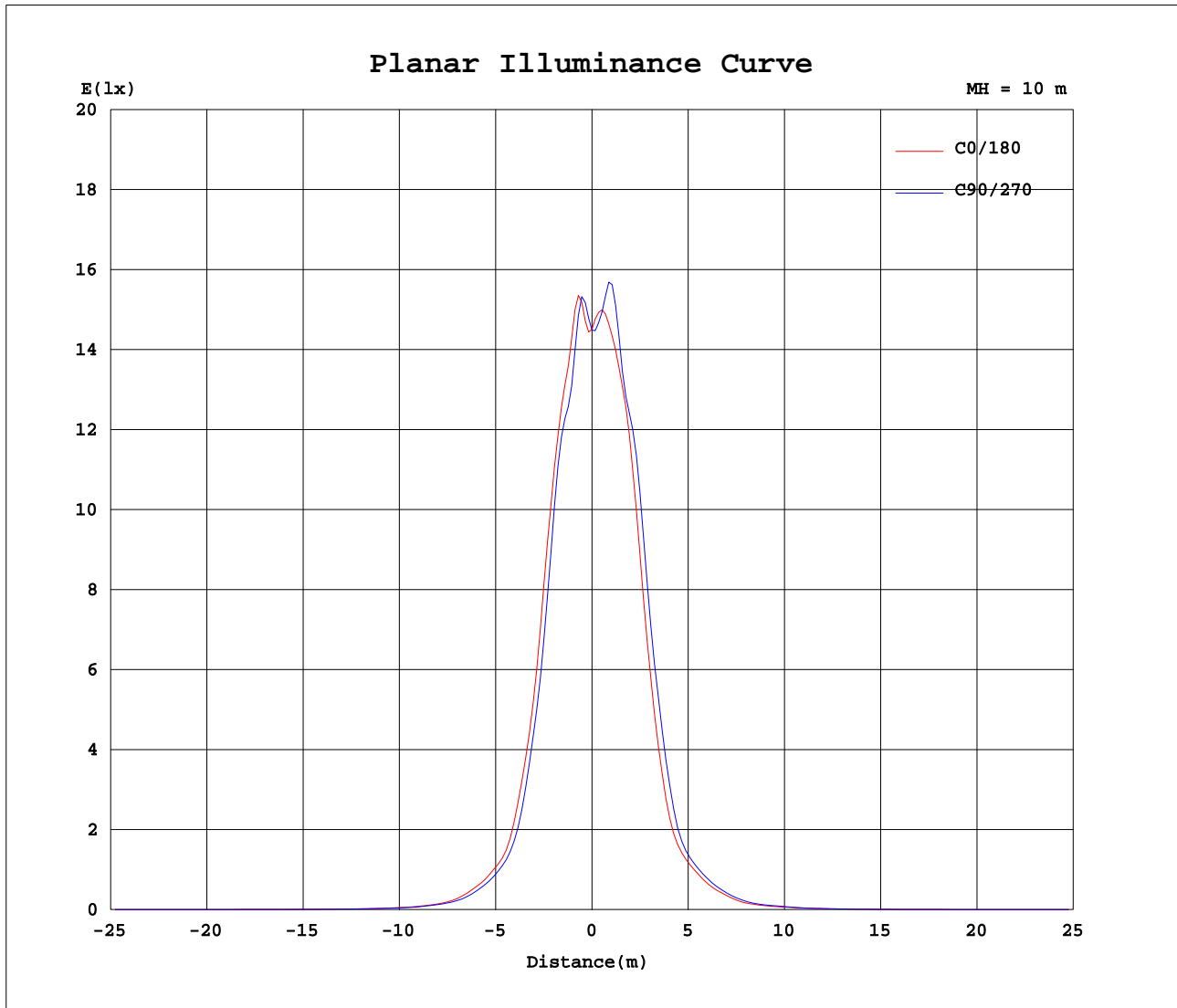
Test:U:120.0V I:0.0884A P:10.40W PF:0.9812 Freq:60.01Hz Lamp Flux:509.876x1 lm		
NAME: LED 轨道灯	TYPE:	WEIGHT:N/A
SPEC.:N/A	DIM.:	SERIAL No.:N/A
MFR.: 东莞市胜智灯饰有限公司	SUR.:	Shielding Angle:N/A



C Range: 0 - 360DEG
 C Interval: 22.5DEG
 Test Speed: HIGH
 Temperature: 24.5DEG
 Operators: Seth
 Test Date: 2017-03-13

γ Range: 0 - 180DEG
 γ Interval: 1.0DEG
 Test System: EVERFINE GO-R5000_V2 SYSTEM V2.0.352
 Humidity: 65.7%
 Test Distance: 26.000m [K=1.4372]
 Remarks:

Planar Illuminance Curve



C Range: 0 - 360DEG
C Interval: 22.5DEG
Test Speed: HIGH
Temperature: 24.5DEG
Operators: Seth
Test Date: 2017-03-13

γ Range: 0 - 180DEG
 γ Interval: 1.0DEG
Test System: EVERFINE GO-R5000_V2 SYSTEM V2.0.352
Humidity: 65.7%
Test Distance: 26.000m [K=1.4372]
Remarks:

LUMINOUS DISTRIBUTION INTENSITY DATA

Test:U:120.0V I:0.0884A P:10.40W PF:0.9812 Freq:60.01Hz Lamp Flux:509.876x1 lm		
NAME: LED 轨道灯	TYPE:	WEIGHT:N/A
SPEC.:N/A	DIM.:	SERIAL No.:N/A
MFR.: 东莞市胜智灯饰有限公司	SUR.:	Shielding Angle:N/A

Table--1

UNIT: cd

C(DEG) γ (DEG)	0	22.5	45	67.5	90	112.5	135	157.5	180	202.5	225	247.5	270	292.5	315	337.5			
0	1450	1450	1450	1449	1449	1448	1447	1445	1450	1450	1450	1449	1449	1448	1447	1445			
5	1518	1442	1386	1377	1416	1448	1448	1428	1481	1618	1643	1528	1587	1577	1479	1459			
10	1240	1206	1152	1127	1160	1184	1203	1244	1315	1354	1355	1334	1343	1357	1319	1280			
15	780	718	682	675	643	667	711	734	864	956	1024	1030	1035	995	908	832			
20	387	322	358	343	301	319	291	293	414	505	537	566	545	543	419	348			
25	172	161	165	156	147	150	154	163	192	227	235	231	230	241	186	172			
30	102	91.5	97.3	89.8	84.3	91.4	90.7	98.6	117	129	138	139	137	130	116	105			
35	50.5	44.7	49.2	44.1	41.7	47.3	46.8	52.1	64.1	71.5	79.0	77.9	76.2	75.4	62.1	52.8			
40	26.1	25.2	22.6	22.0	23.1	23.0	25.5	26.9	30.1	33.9	38.7	37.0	36.2	35.8	30.8	26.8			
45	14.9	13.6	13.0	12.6	12.7	12.7	14.1	15.8	18.1	20.7	22.6	23.2	22.1	19.3	17.6	16.5			
50	9.29	8.49	8.34	8.09	7.77	8.18	8.15	8.68	10.1	10.6	11.5	12.2	11.4	10.2	10.1	8.99			
55	5.82	5.35	5.04	4.79	5.02	4.96	5.26	5.63	5.88	5.94	6.58	6.43	6.50	6.34	5.87	5.62			
60	3.93	3.69	3.70	3.53	3.61	3.61	3.53	3.83	3.76	3.68	3.69	3.75	3.75	3.61	3.37	3.44			
65	2.67	2.67	2.60	2.51	2.44	2.51	2.51	2.82	2.51	2.50	2.28	2.27	2.35	2.27	2.11	2.11			
70	1.73	1.73	1.73	1.73	1.65	1.58	1.65	1.88	1.41	1.56	1.18	1.25	1.41	1.25	1.10	1.09			
75	0.87	0.94	0.87	0.79	0.86	0.87	0.71	0.86	0.23	0.08	0.15	0.15	0.31	0.23	0.23	0.08			
80	0.32	0.39	0.16	0.01	0.08	0.16	0.24	0.16	0.00	0.00	0.00	0.00	0.00	0.00	0.00	0.00			
85	0.00	0.00	0.00	0.00	0.00	0.00	0.00	0.00	0.00	0.00	0.00	0.00	0.00	0.00	0.00	0.00			
90	0.00	0.00	0.00	0.00	0.00	0.00	0.00	0.00	0.00	0.00	0.00	0.00	0.00	0.00	0.00	0.00			
95	0.00	0.00	0.00	0.00	0.00	0.00	0.00	0.00	0.00	0.00	0.00	0.00	0.00	0.00	0.00	0.00			
100	0.00	0.00	0.00	0.00	0.00	0.00	0.00	0.00	0.00	0.00	0.00	0.00	0.00	0.00	0.00	0.00			
105	0.00	0.00	0.00	0.00	0.00	0.00	0.00	0.00	0.00	0.00	0.00	0.00	0.00	0.00	0.00	0.00			
110	0.00	0.00	0.00	0.00	0.00	0.00	0.00	0.00	0.00	0.00	0.00	0.00	0.00	0.00	0.00	0.00			
115	0.00	0.00	0.00	0.00	0.00	0.00	0.00	0.00	0.00	0.00	0.00	0.00	0.00	0.00	0.00	0.00			
120	0.00	0.00	0.00	0.00	0.00	0.00	0.00	0.00	0.00	0.00	0.00	0.00	0.00	0.00	0.00	0.00			
125	0.00	0.00	0.00	0.00	0.00	0.00	0.00	0.00	0.00	0.00	0.00	0.00	0.00	0.00	0.00	0.00			
130	0.00	0.00	0.00	0.00	0.00	0.00	0.00	0.00	0.00	0.00	0.00	0.00	0.00	0.00	0.00	0.00			
135	0.00	0.00	0.00	0.00	0.00	0.00	0.00	0.00	0.00	0.00	0.00	0.00	0.00	0.00	0.00	0.00			
140	0.00	0.00	0.00	0.00	0.00	0.00	0.00	0.00	0.00	0.00	0.00	0.00	0.00	0.00	0.00	0.00			
145	0.00	0.00	0.00	0.00	0.00	0.00	0.00	0.00	0.08	0.00	0.00	0.08	0.00	0.00	0.00	0.00			
150	0.00	0.00	0.00	0.00	0.00	0.00	0.00	0.00	0.55	0.55	0.39	0.47	0.16	0.32	0.24	0.39			
155	0.00	0.00	0.00	0.00	0.00	0.00	0.00	0.00	1.18	1.10	1.03	1.18	0.63	0.87	1.02	1.02			
160	0.00	0.00	0.00	0.00	0.00	0.00	0.00	0.08	1.65	1.33	1.26	1.65	1.25	1.26	1.33	1.49			
165	0.00	0.00	0.08	0.00	0.16	0.23	0.16	0.08	1.65	1.33	1.26	2.20	1.41	1.41	1.57	1.80			
170	0.23	0.08	0.39	0.31	0.47	0.47	0.63	0.31	1.65	1.34	1.18	2.27	1.41	1.72	1.72	1.80			
175	0.47	0.39	1.34	0.94	1.17	1.18	1.25	0.86	1.65	1.25	0.94	2.27	1.41	1.65	1.65	1.87			
180	0.78	0.70	1.97	1.25	1.64	1.57	1.80	1.33	1.49	0.87	0.71	1.72	1.25	1.49	1.65	1.64			

C Range: 0 - 360DEG
 C Interval: 22.5DEG
 Test Speed: HIGH
 Temperature:24.5DEG
 Operators:Seth
 Test Date:2017-03-13

γ Range: 0 - 180DEG
 γ Interval: 1.0DEG
 Test System:EVERFINE GO-R5000_V2 SYSTEM V2.0.352
 Humidity:65.7%
 Test Distance:26.000m [K=1.4372]
 Remarks: